

Alaro City

2026

A DEVELOPMENT BY
RENDEAVOUR



Alaro City



2018

Alaro City



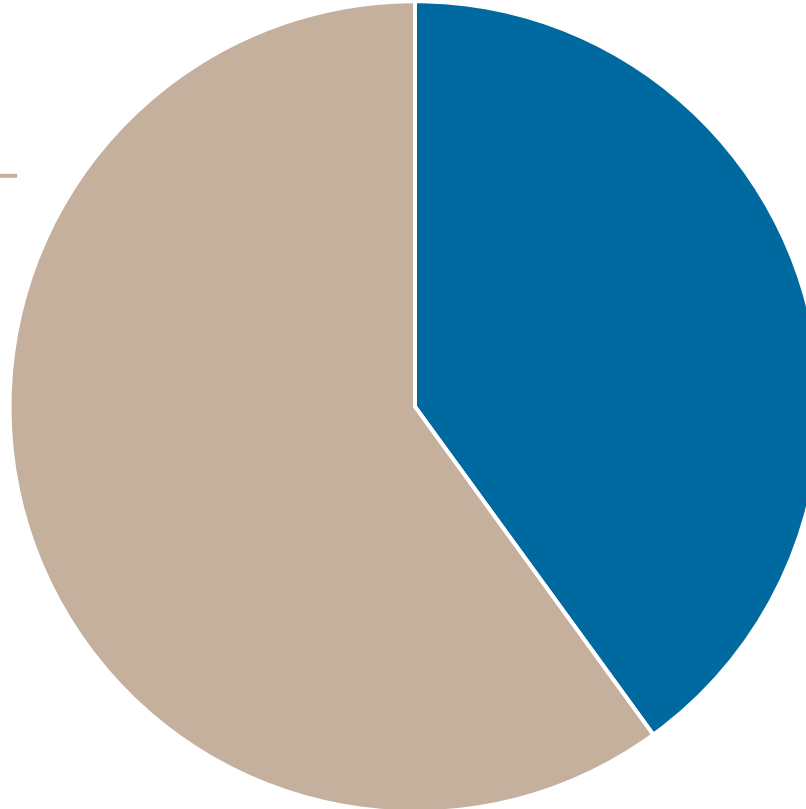
2026

Government-Endorsed, Privately Owned and Managed



60%

RENDEAVOUR
AFRICA'S URBAN FUTURE



40%



LAGOS STATE GOVERNMENT



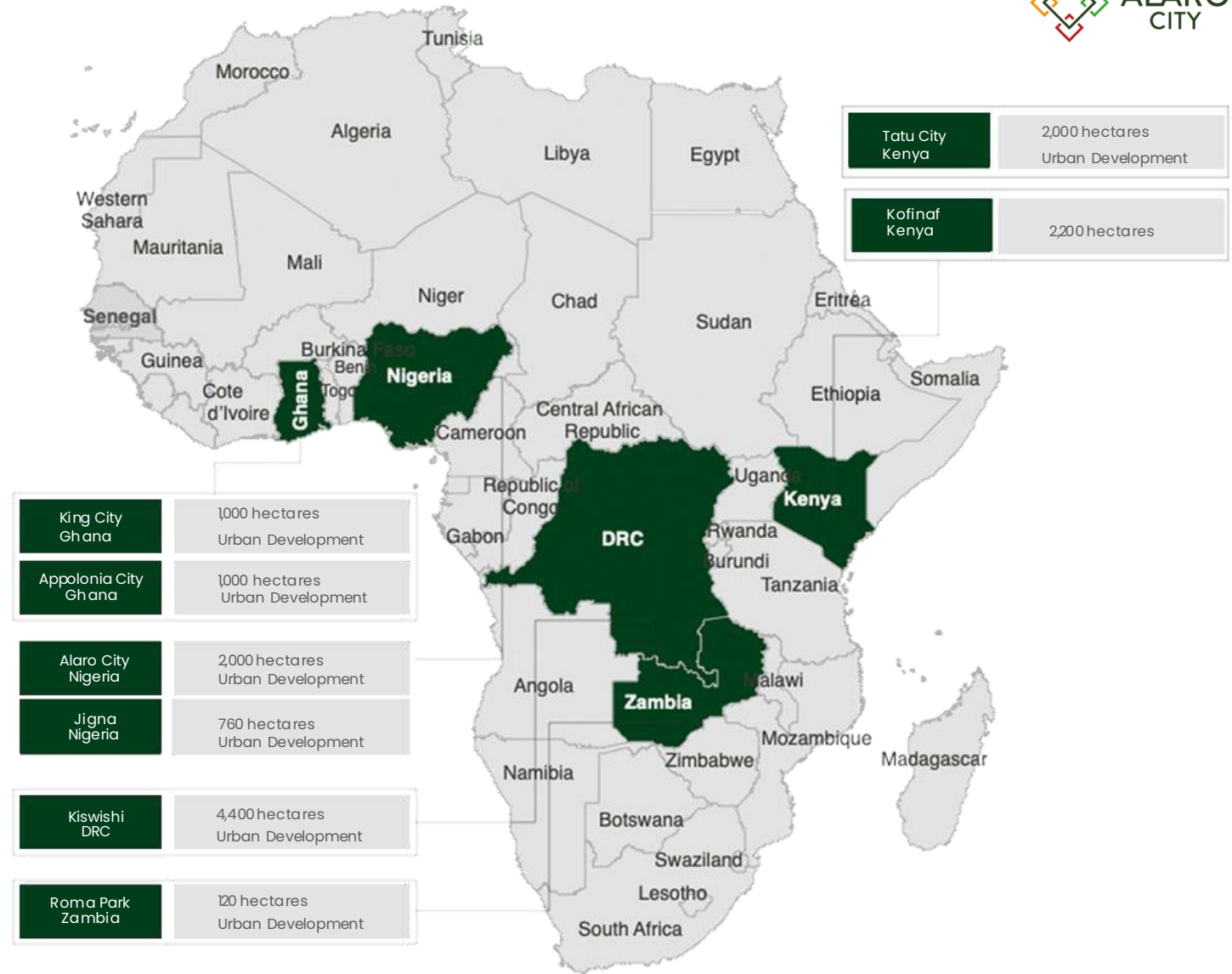
**Lekki Worldwide
Investments Limited
(LWIL)**

Rendeavour Portfolio



With a land portfolio
Of over 12,000 hectares.

Rendeavour is Africa's
Largest New City Developer.



Rendeavour Standard



Rendeavour provides secure, predictable and proven environments for individuals and businesses.

Rendeavour cities are home to investments by the **U.S. International Development Finance Corporation, African Development Bank, Norfund, Africa Finance Corporation, World Bank, Global Challenges Canada, Soros Economic Development Fund, British International Investment**, major banks and local and international real estate developers and funders.

Land



Secure land title and alignment of local stakeholders and communities

Development



Buildings that set the benchmark for the continent

Zoning



All approvals in place for sustainable mixed-use development

City management



Private utilities with 24/7 water, power and maintenance

Infrastructure



World-class quality with technology-relevant solutions for Africa

Master plan



International standards of excellence with local context

Rendeavour Board and Shareholders



Stephen Jennings

Founder & CEO
Shareholder



Frank Mosier

Founding Chairman
Shareholder



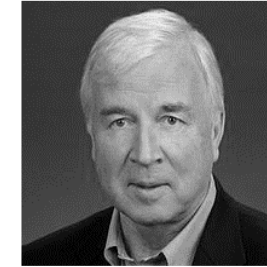
David Kippen

Chairman



Lord Ashcroft
KCMG PC

Deputy Chairman
Shareholder



Torstein Hagen

Shareholder



Yomi Ademola

Chairman, West Africa
Country Head, Nigeria
Shareholder



Preston Mendenhall

Group COO
Country Head, Kenya
Shareholder



**Linda Thomas-
Greenfield**

Independent Director



Darrell M. Blocker

Independent Director



Graeme Wheeler

Independent Director



Robert Reid

Director
Shareholder



Simon Edwards

Director
Shareholder

Alaro City Board of Directors



Ayodeji Gbeleyi

Chairman



Stephen Jennings

Director



Hakeem Muri-Okunola

Director



Frank Mosier

Director



Oyeyemi Olusanya

Director



Yomi Ademola

Managing Director



Khadija Belgore-Yusuf

Director



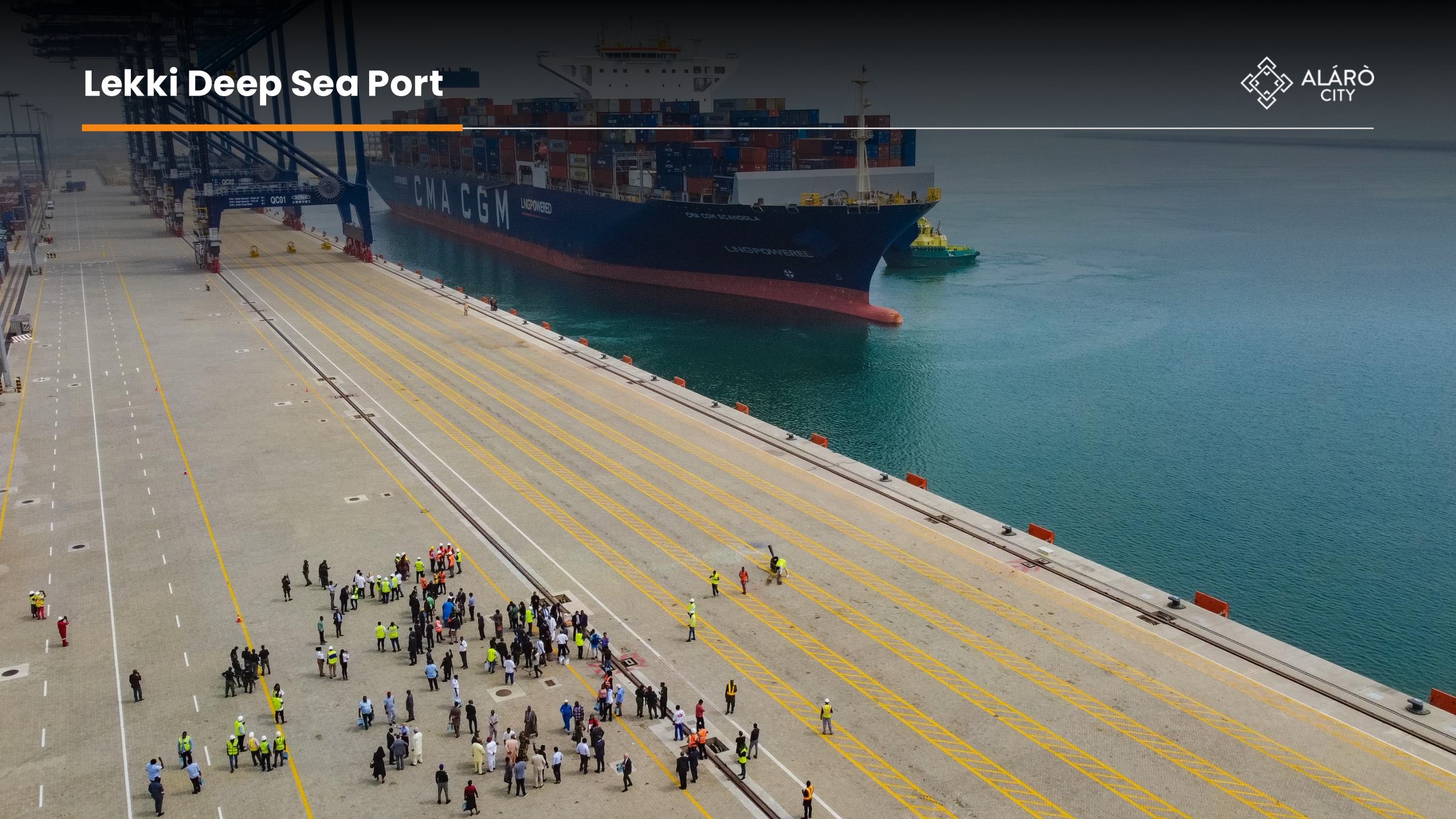


Transportation Availability & Key Infrastructure

Alaro City Location



Lekki Deep Sea Port



Lekki Deep Sea Port







 Follow Us on Google News



-  MENU
- NEWS ▾
- METRO
- SPORT
- LIFE ▾
- TECH
- GTV
- BUSINESS ▾
- POLITICS
- OPINION
- GWF
- WOMAN
- REVIEW

Lekki Port accounts for 40.6% of Nigeria's cargo throughput amid 24.8% surge

By : Adaku Onyenucheya Date: 4 March 2026 4:04am WAT Share :       Follow Us on Google Discover



Lekki Deep Sea Port

Alaro City is located

30 minutes to the Lekki Deep Sea Port

– the best suited destination to have a seamless import and export in Nigeria.

- The deep-sea port of Lekki is the **first port in Nigeria** with **ship-to-shore cranes**. They can lift 65 tons in twin-lift mode, 50 tons in single-lift mode or 85 tons under a hook.
- The turning circle is 600 meters, enough for a vessel up to 20,000 standard containers (Twenty-Foot Equivalent Unit - TEU).



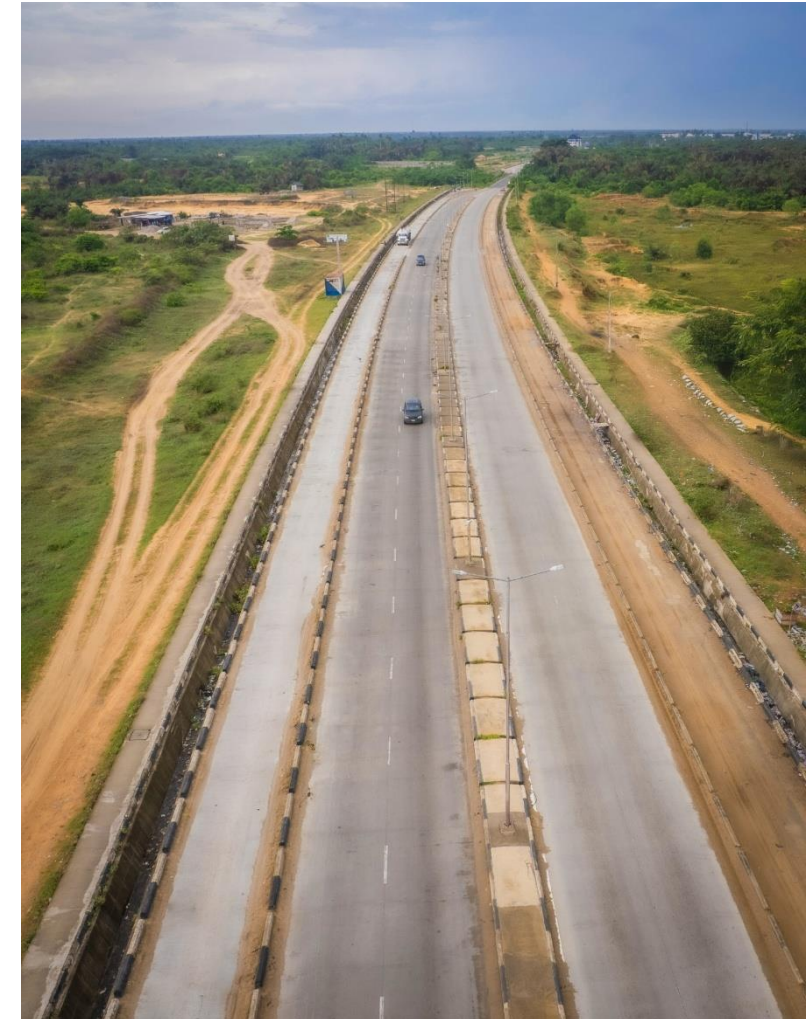
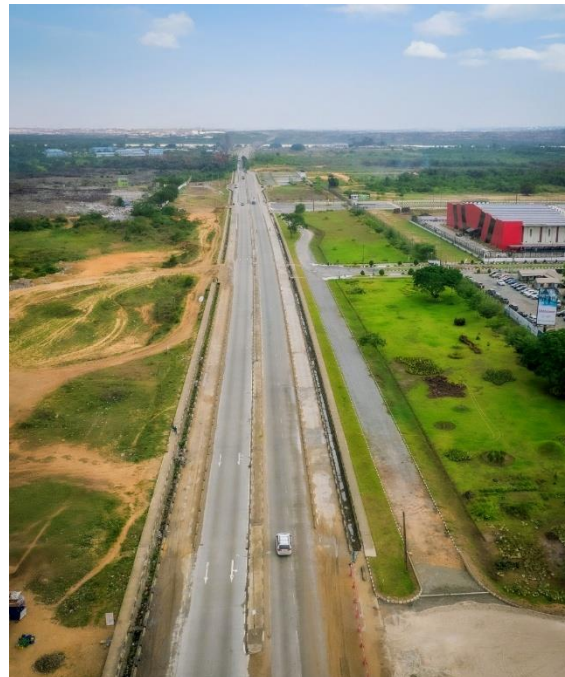
Port: Lekki Green Corridor

As a Free Zone enterprise, you are free from consignments checks until they reach the warehouse. Within 24 hours, your goods are in Alaro City.



Renovation of Lekki-Epe Expressway

Upon completion, time to reach **Alaro City from Victoria Island** will reduce to **45 minutes**.

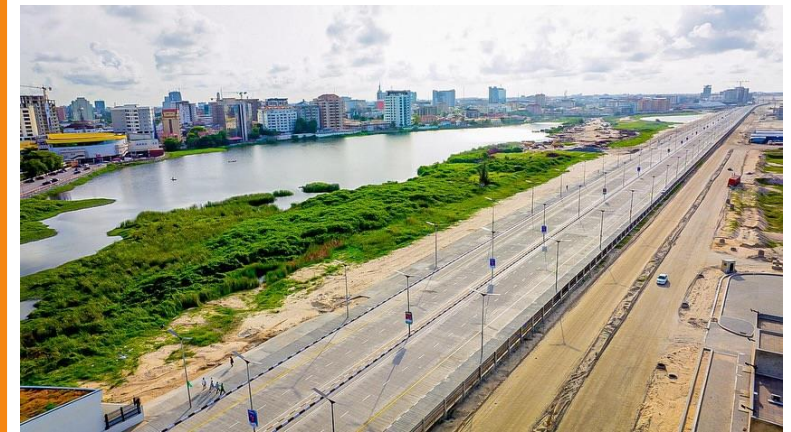


Lagos-Calabar Expressway

700-kilometer Lagos – Calabar Expressway is designed to extend through 9 states with two spurs leading to the Northern States.

The time to reach Alaro City from Lagos using the new expressway will be reduced to **40 minutes**.

30KM already commissioned by **President Bola Ahmed Tinubu** on 31 May 2025.



Ijebu Ode-Epe Expressway

A New interchange connecting **Ijebu Ode in Ogun State to Lagos, through Epe** on its south-eastern fringe.



7th Axial Road

A **50km road** that runs directly from the **Lagos-Calabar Expressway** cutting off the Lekki-Epe expressway and goes straight into Ijebu-Itele and Ogbere area.

A strategic channel to ease the cargo evacuation from the Lekki Deep Seaport.

Lekki-Epe Expressway: Opening new corridors with road rehabilitation, upgrade



Governor Babajide Sanwo-Olu of Lagos State.

Governor Babajide Sanwo-Olu of Lagos State.

By Gabriel Olawale

Even though the Lekki-Epe axis is seen as the future of Lagos State owing to the emergence of the area as the fastest growing property corridor and industrialization, traffic gridlock is what comes to mind any time the place is mentioned.



Green Light Rail (Planned)

The Green Line is a **71** kilometre route from Marina to the Lekki Free Zone, one of the fastest-growing industrial areas on the continent today.



New International Airport (Planned)

The new Lekki International airport **cargo terminal** will be rolled out first, with a further expansion to passengers terminal with **five million passengers p/a**.

In January 2025, Lagos State Government signed an MoU with Summa Group, an international construction company, for the development and construction of Lekki-Epe International Airport.

Lagos Signs MoU With Summa Group To Construct Lekki-Epe Int'l Airport

Sanwo-Olu said the Lekki-Epe Airport will facilitate travel and create new opportunities for businesses and residents throughout the state.

By [Donatus Anichukwueze](#)



Updated February 8, 2025



The signing of the MoU between Lagos State government and Summa Group for the construction of Lekki-Epe International Airport.

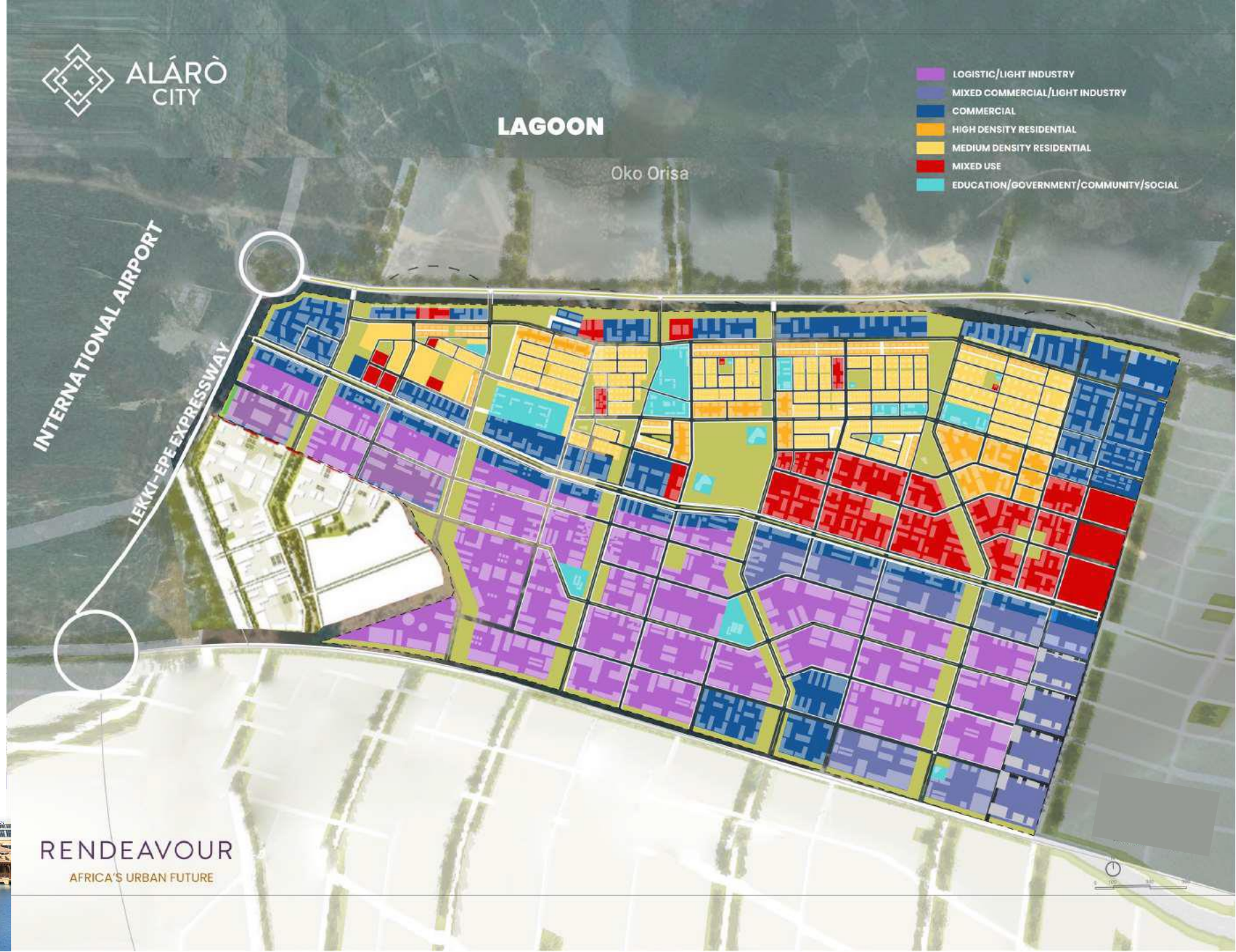
City scale

Almost three times
the size of Victoria Island.



Master Plan

Designed by world renowned urban planners Skidmore, Owings & Merrill (SOM).



Rain Garden

Signed by Management ALARO CITY

Don't Litter

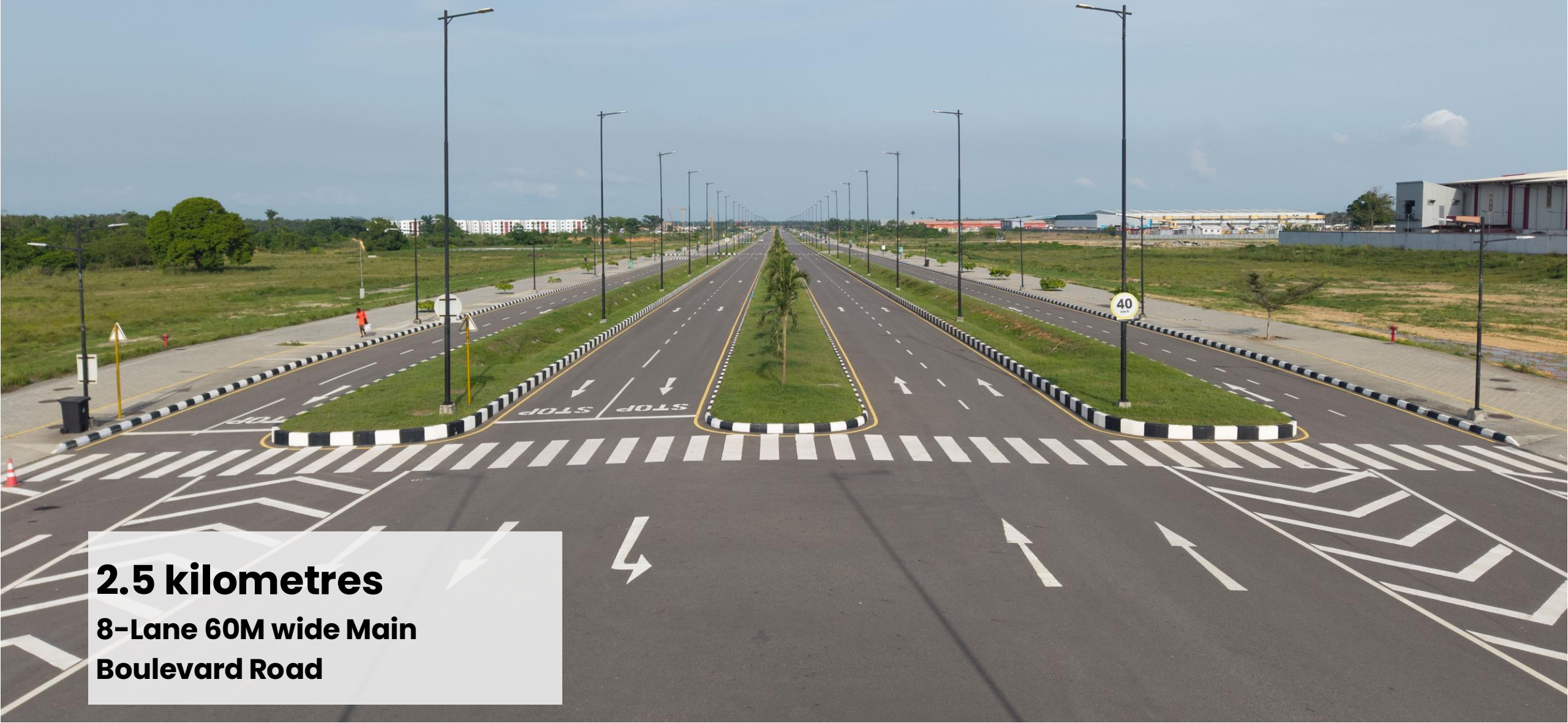


Help Keep Alaro City Clean

Signed by Management ALARO CITY



Main Boulevard



2.5 kilometres

**8-Lane 60M wide Main
Boulevard Road**

Independent Power Plant



Alaró City Independent Power Plant is licensed to generate and distribute 10MW and it is scalable to 120MW capacity.

Alaro City Water Treatment Plant



Alaro City's water treatment plant meets WHO & SON standards, ensuring clean water for all 24/7.



World Health Organization



Security



Alaro City has its own licensed security company, to complement Lagos State's level of security, which is the highest across the country.



Free Zone Incentives in Alaro City



- **0%** Corporate Income Tax (subject to CIT upon >25% sales to customs territory)
 - **0%** Value Added Tax
 - **0%** Capital Gains Tax
 - **0%** Withholding Tax (subject to WHT on payments to non-FZEs, such as dividends)



100% foreign ownership of investment allowed and no expatriate quotas required



One stop shop for approvals, permits and licenses



Duty free import of raw materials, equipment and other inputs of production leading to an average of **16% - 25%** savings on production and constructions costs

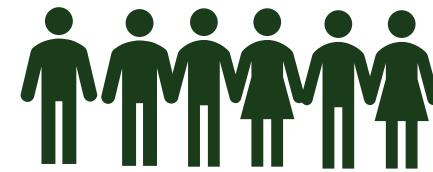


100% repatriation of capital, profits and dividend

2026

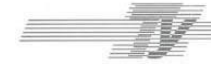
110+ companies
joined Alaro City
to date

Over 700
residential investors
chose Alaro City



3,641 (Direct &
indirect employees)



Businesses, Brands and Investors



Ariel Foods



- 28,000 sqm
- Largest producer of ready-to-use therapeutic food (RUTF)
- Exports RUTF to 20 countries



- 50,000 sqm
- 2nd Largest industrial group in Nigeria
- Detergent production plant

HMD Africa



- 5,000 sqm
- Trading and distribution of heavy equipment



- 28,000 sqm
- Construction and production of building materials


Mantrac Caterpillar





- 20,000 sqm
- US brand, machinery distribution

TY Logistics Park



- 90,000 sqm
- The largest grade A Logistics Park in Nigeria

Production Facility



Production Facility

PF 1 - Plot Size: 13,000 sqm

PF 2 - Plot Size: 39,000 sqm

Largest Residential Development in the Lekki Free Zone



Universal One

**576 units of apartment complex
developed by Universal Homes**



Universal Homes: Rental Income & Growth Potential



Furnished



From **\$6,000**

per annum, per 2-bedroom apartment

Unfurnished



From **\$4,000**

per annum, per 2-bedroom apartment

(Entry level positioning within a growing rental market)

Estimated Rental Yield: 5% – 8%+

Why This Grows:

- Expanding business ecosystem within Alarò City
- Rising demand for quality housing in Lekki Free Zone
- Increasing corporate tenancy demand

Universal One

Upcoming leisure center will feature:

- Swimming pool
- Sports center
- Basketball court
- Football pitch
- Paddle Court
- Shopping Plaza
- Bar
- Recreational space
- Kids playground

Alaro City offers a cohesive ecosystem for high quality of life of all residents.



Universal One Leisure Centre



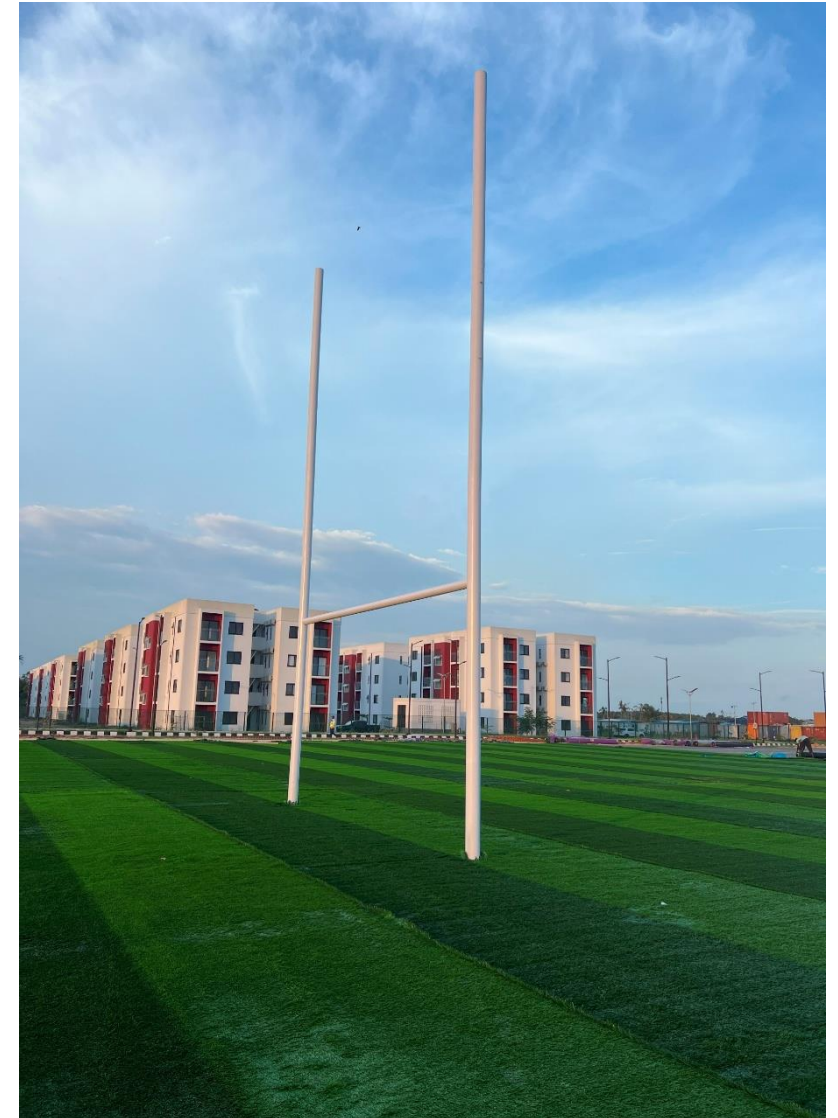
Universal One Leisure Centre



Alaro City International Rugby Pitch



The pitch hosted two international friendly games between Nigeria's Green Falcons and Ghana's Leopardess.



Proud sponsors of the Nigerian Rugby League Association (NRLA) and the Green Falcons

Wellington College International School



Wellington College International Lagos will offer unparalleled academic excellence, state-of-the-art facilities, and a holistic approach to education for pupils aged 2-18 years old.

Academic calendar starts September 2027



Wellington College International School



WELLINGTON
COLLEGE
INTERNATIONAL
LAGOS



January till date

Iwosan Lagoon Hospital



Alaro City Helipad



Corporate Social Responsibility



Students at Etiwa training center

Corporate Social Responsibility



The Newly Graduated Trainees

Corporate Social Responsibility



Renovated by Alaro City
Development FZC/2024

Renovation of Christ Church Primary School, Epe.

Corporate Social Responsibility



Renovation of Christ Church Primary School, Epe.

Corporate Social Responsibility



Renovated by
Alaro City Development FZC/2025



Constructed by
Alaro City Development FZC/2020

Borehole Project, Animashaun, Epe.

Corporate Social Responsibility



Beneficiaries of RenWoman STEM Boot Camp

Corporate Social Responsibility



HEAD, SHOULDERS,
SHAKE THE MANGO TREE
& GIGGLE, NIGGA
THE WAY
JIMMY
OLD
E

School Feeding program



THANK YOU



Visit Alaro City today and watch your investment grow

Call: 0817 234 56 77

Email: grow@alarocity.com

Website: www.alarocity.com

A DEVELOPMENT BY
RENDEAVOUR

