



R E S I D E N C E S



# Location

Nestled in the heart of Ikoyi, Zurii Residence stands as a symbol of sophistication and exclusivity. Located on George Street, one of Lagos' most distinguished neighborhoods, it offers an exceptional blend of luxury, security, and convenience. This prime address provides residents with the perfect balance of privacy and accessibility, making it a sought-after destination for refined urban living.

Positioned within Lagos Island Local Government Area, Zurii Residence ensures seamless connectivity to the city's commercial hubs, upscale leisure spots, and world-class dining and entertainment. With effortless access to Victoria Island, Lekki, and Lagos' thriving business districts, it is ideal for professionals, entrepreneurs, and families who appreciate a refined and well-connected lifestyle.

Ikoyi is synonymous with prestige and elegance, known for its upscale residences, influential community, and reputation as a hub of luxury. Living at Zurii Residence means embracing a world of comfort, exclusivity, and sophistication in one of Lagos' most coveted locations.



# Design Considerations



## **Safety & Security**

With advanced security systems, controlled access, and 24/7 surveillance, Zuri Residence ensures a secure and private living environment, offering residents peace of mind.

## **Sustainability**

Designed with the future in mind, Zuri Residence incorporates eco-friendly materials, smart home technology, and energy efficient solutions to minimize environmental impact while enhancing efficiency.

## **Functionality & Comfort**

Zuri Residence offers meticulously designed apartments that blend luxury, comfort, and modern convenience. With high-end finishes, spacious layouts, and smart technology, each space caters to professionals, families, and couples alike.

# Features & Recreation



# Features

Zurii Residence is designed for those who seek an exceptional living experience, blending luxury, comfort, and convenience. Every detail has been curated to provide residents with a seamless lifestyle, whether for relaxation, recreation, or security.

With world-class amenities and thoughtfully designed spaces, residents enjoy an unparalleled standard of living, complete with modern conveniences and premium facilities.

-  24/7 Concierge & Security
-  Infinity Pool & Sun Deck
-  State-of-the-Art Fitness Center
-  Luxurious Sauna
-  High-speed Fibre Optic Connectivity
-  Smart Home Automation
-  Kids Play Lounge
-  Roof Top Lounge
-  Top International Schools Nearby
-  Premier Shopping Malls
-  Proximity to Business & Social Hubs
-  World-Class Healthcare Nearby



## 24/7 Concierge & Security

Zurii Residence delivers a seamless blend of luxury and convenience with its sophisticated concierge services. From the moment you step into our elegantly designed concierge area, you're welcomed into an atmosphere of refined living. Our dedicated team is available 24/7 to assist with deliveries, reservations, and exclusive services tailored to your needs, ensuring every aspect of your lifestyle is effortlessly managed.

Security is a top priority, with 24/7 surveillance, controlled access, and highly trained personnel providing a safe and private environment. Advanced security systems are seamlessly integrated into the residence, allowing you to enjoy complete peace of mind whether at home or away. Here, luxury meets assurance for a truly elevated living experience.







## Gym

Our gym features top-tier equipment in a stylish, well-lit space, perfect for intense workouts or light stretches, all just steps from home.

# Kids Play Lounge

At Zurii Residence, our Children's Play Lounge is thoughtfully designed to spark creativity, learning, and fun in a safe environment. Featuring interactive play structures, soft surfaces, and engaging activities, it encourages social interaction, cognitive growth, and motor skill development. Whether climbing, building, or engaging in imaginative play, children have endless opportunities to explore and learn.





With a mix of open play areas and cozy nooks for quiet activities, there's something for every child to enjoy. Parents can relax knowing their little ones are in a secure and stimulating space designed to nurture happiness, creativity, and development.

# Rooftop Leisure Suite

A serene escape for relaxation, socializing, and breathtaking views, the Rooftop Leisure Suite blends comfort and sophistication. Featuring stylish lounge seating, lush greenery, and panoramic cityscapes, it's the perfect retreat to unwind, entertain, and embrace elevated living.





Rooftop Infinity Pool

# Rooftop Lounge



Step into the Games Room at Zuri Residence, a dynamic space designed for entertainment and relaxation. Whether you're in the mood for a friendly match or an intense competition, this stylish lounge offers a range of games to suit every interest.

Challenge friends to a game of billiards, test your skills at the foosball table, or enjoy a laid-back board game session. With a vibrant yet sophisticated ambiance, the Games Room is the perfect retreat for unwinding, socializing, and making lasting memories.



# 4 Bedroom Maisonette



# Living Room

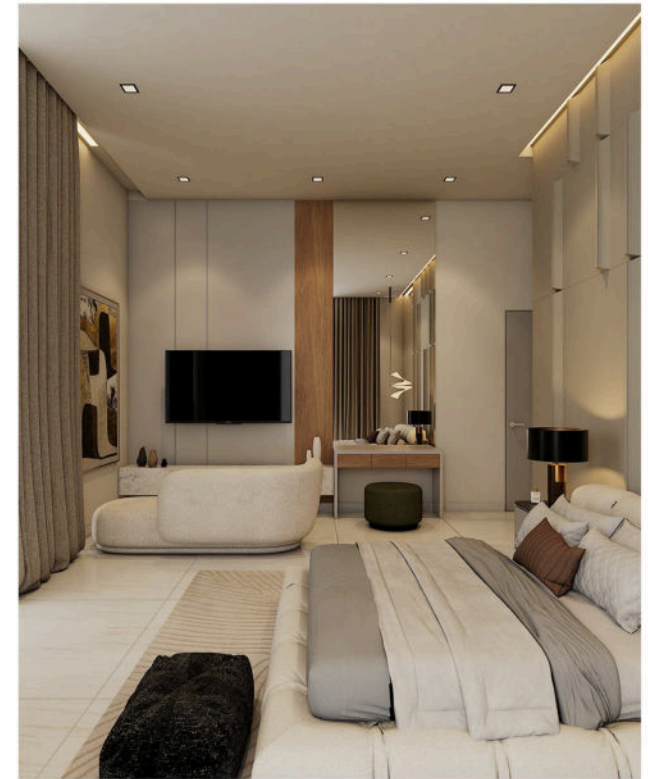
The living room in our four-bedroom apartments is a masterpiece of space and elegance, designed for both relaxation and entertainment. Expansive layouts, floor-to-ceiling windows, and premium finishes create an inviting atmosphere filled with natural light. Whether hosting guests or unwinding after a long day, this space seamlessly blends comfort with sophistication. Thoughtfully curated furnishings, modern lighting, and a seamless connection to the dining area ensure a refined yet cozy living experience.

# Dining Area

The dining area in our four-bedroom apartments is designed for both everyday meals and special gatherings. Thoughtfully positioned to enhance the flow of space, it features elegant finishes, ample seating, and a refined ambiance that complements the home's luxurious aesthetic. Whether enjoying a casual breakfast or hosting a formal dinner, this space brings family and friends together in style and comfort.

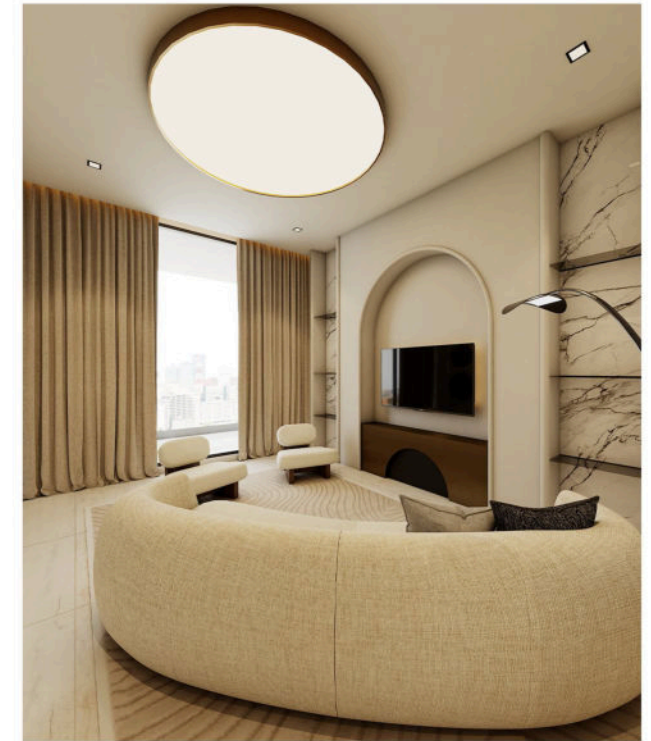


# Bedroom



The bedrooms in our four-bedroom apartments are designed to be serene retreats, offering a perfect blend of luxury and comfort. Spacious layouts, elegant furnishings, and premium finishes create an inviting atmosphere for rest and relaxation. Large windows allow natural light to fill the space, while ample storage ensures a clutter-free environment. Every detail is crafted to enhance your comfort and elevate your living experience.

# Family lounge

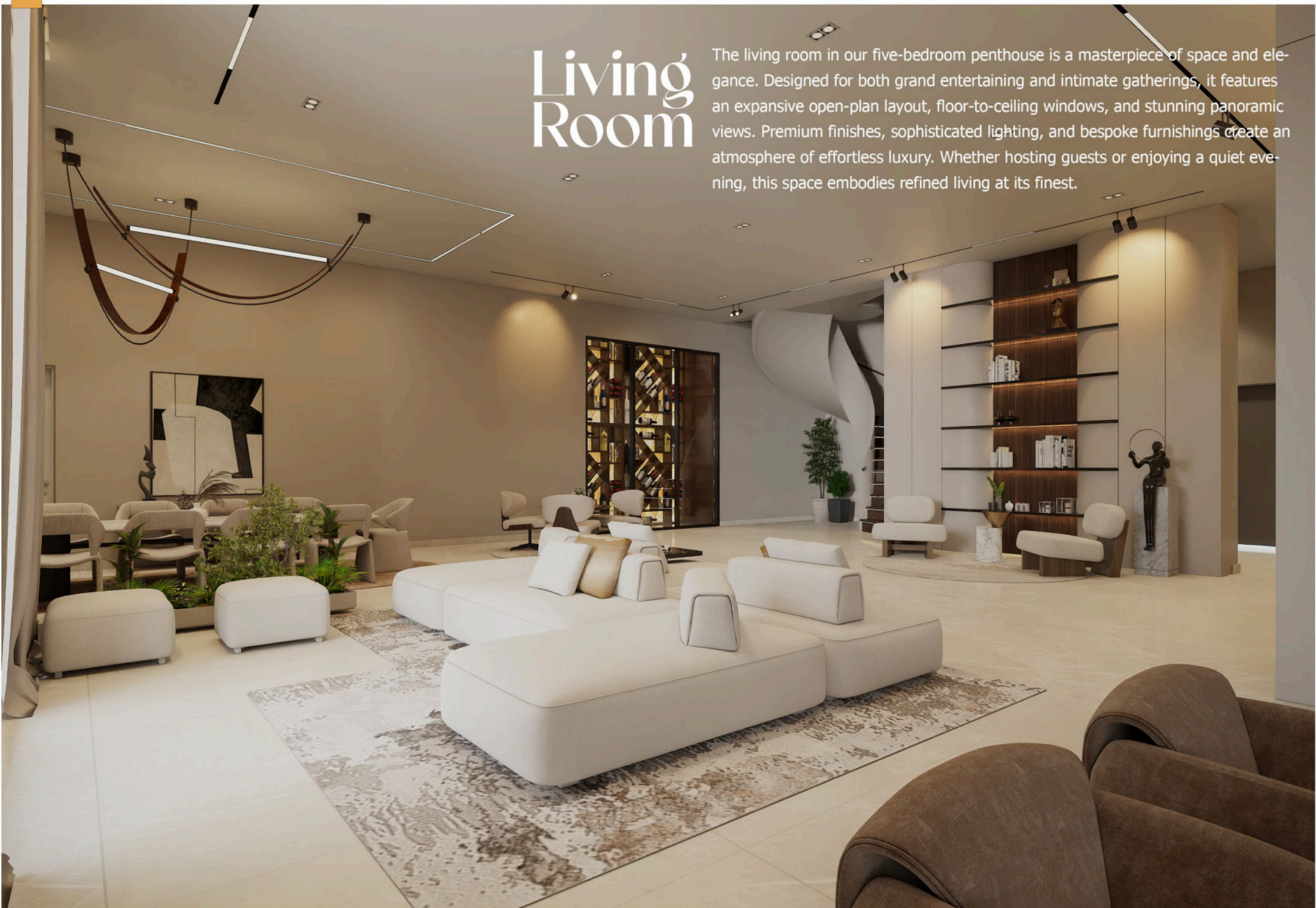


Designed as the heart of the home, the family lounge in our four-bedroom apartments offers a warm and inviting space for quality time together. Spacious and elegantly styled, it provides the perfect setting for movie nights, casual conversations, or simply unwinding in comfort. Large windows invite natural light, while premium finishes and modern furnishings create a sophisticated yet cozy ambiance. Whether relaxing or entertaining, this lounge is where cherished moments are made.

# 5 bedroom Penthouse

# Living Room

The living room in our five-bedroom penthouse is a masterpiece of space and elegance. Designed for both grand entertaining and intimate gatherings, it features an expansive open-plan layout, floor-to-ceiling windows, and stunning panoramic views. Premium finishes, sophisticated lighting, and bespoke furnishings create an atmosphere of effortless luxury. Whether hosting guests or enjoying a quiet evening, this space embodies refined living at its finest.

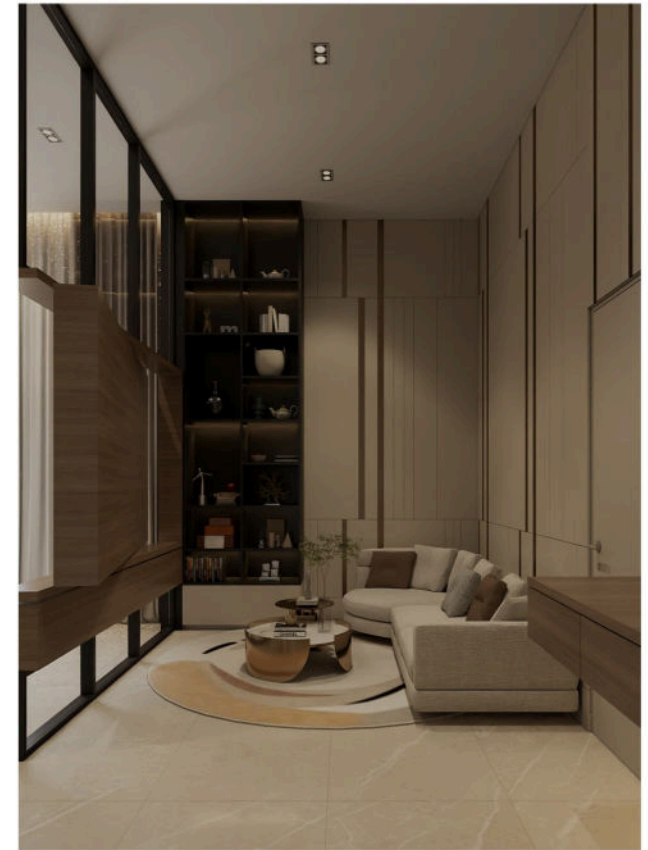


# Dining Area

The dining area in the five-bedroom penthouse is designed for both intimate gatherings and grand entertaining. With an expansive layout, elegant finishes, and a seamless connection to the living spaces, it offers a sophisticated setting for every meal. Natural light, refined furnishings, and a thoughtfully curated ambiance make dining here an experience in itself.



# Bedroom



Each bedroom in the five-bedroom penthouse is a private retreat, designed with elegance and comfort in mind. Spacious layouts, premium finishes, and floor-to-ceiling windows create an airy and serene atmosphere. Thoughtfully designed storage, high-quality furnishings, and soft lighting enhance the luxurious feel, ensuring a restful and rejuvenating space for every resident.



# Kitchen

The kitchen in the five-bedroom penthouse is a masterpiece of style and functionality. Designed for both everyday living and gourmet experiences, it features top-tier appliances, sleek cabinetry, and premium countertops. With ample space for cooking and entertaining, this well-appointed kitchen blends elegance with practicality, making it the heart of the home.

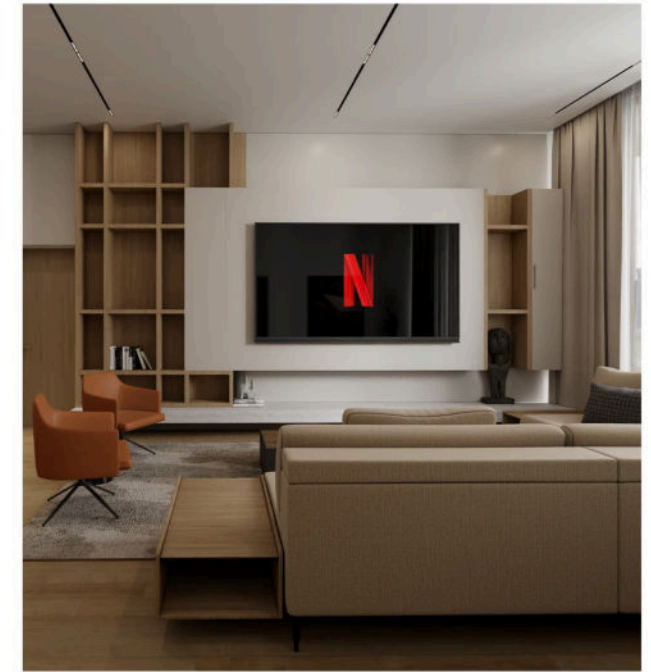
# Family Lounge

A perfect blend of comfort and style, the family lounge in our five-bedroom penthouse offers a warm and inviting space for relaxation and connection. Designed for everyday living, it features plush seating, elegant décor, and an open layout that encourages effortless conversation. Whether unwinding after a long day or creating cherished memories with loved ones, this lounge is the heart of the home.



# 3 Bedroom Apartment

# Living Room



At Zurii Residence, the living room is more than just a space, it's where comfort meets elegance. Designed with spacious layouts and expansive windows, each living area is bathed in natural light, creating an inviting atmosphere perfect for relaxation or entertaining.

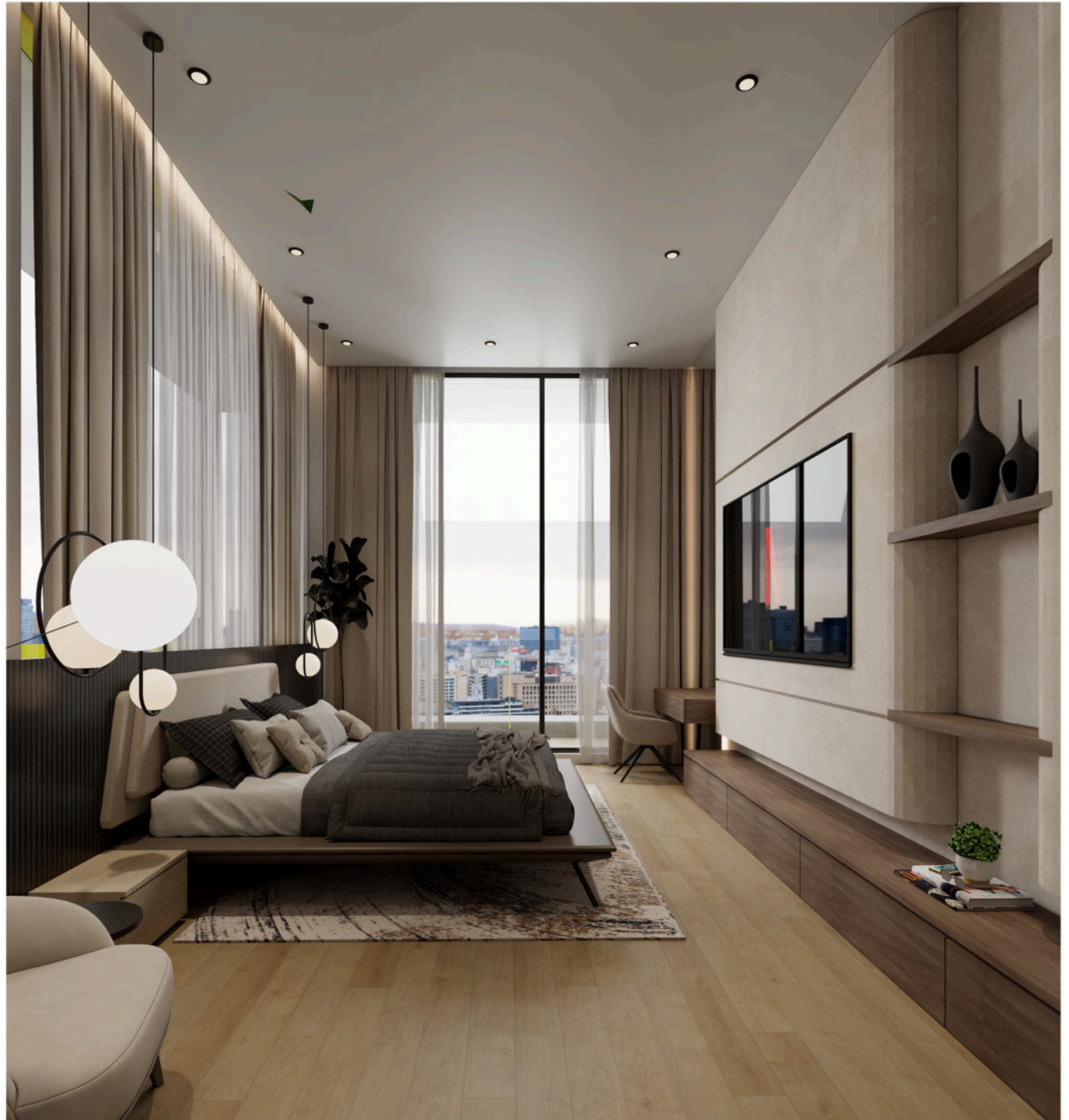
Every detail is meticulously curated, from high-end flooring to modern finishes that enhance the space's sophistication. Whether enjoying a quiet evening or hosting guests, the seamless flow between the living, dining, and balcony areas ensures a refined living experience tailored to contemporary lifestyles.

# Bedroom

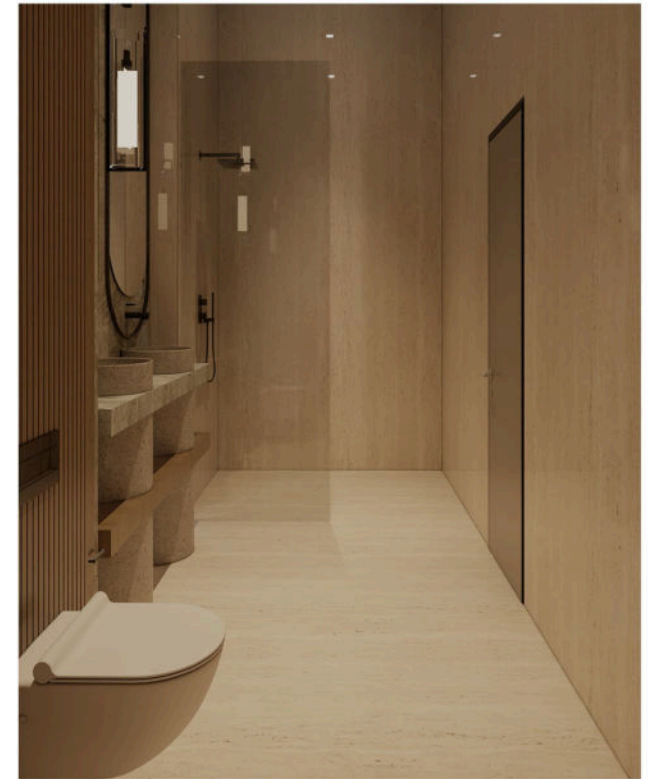


The bedrooms at Zuri Residence are designed to be your private retreat, combining luxury and tranquility. Spacious layouts, large windows, and premium furnishings create an ambiance of relaxation, while soft lighting and high-quality finishes add a touch of sophistication.

Each bedroom is thoughtfully designed for both style and functionality, offering ample storage, cozy atmospheres, and an elegant aesthetic. Whether unwinding after a long day or waking up to serene views, these bedrooms provide the perfect balance of comfort and refinement.



# Bathroom



The bathrooms at Zurii Residence blend luxury with functionality, offering a serene retreat for relaxation. Designed with premium materials, sleek fixtures, and modern conveniences, each space exudes sophistication and comfort. Spacious layouts, elegant lighting, and spa-like features create an atmosphere of indulgence, transforming daily routines into moments of tranquility. Whether preparing for the day or unwinding in the evening, our bathrooms provide the perfect balance of style and practicality.



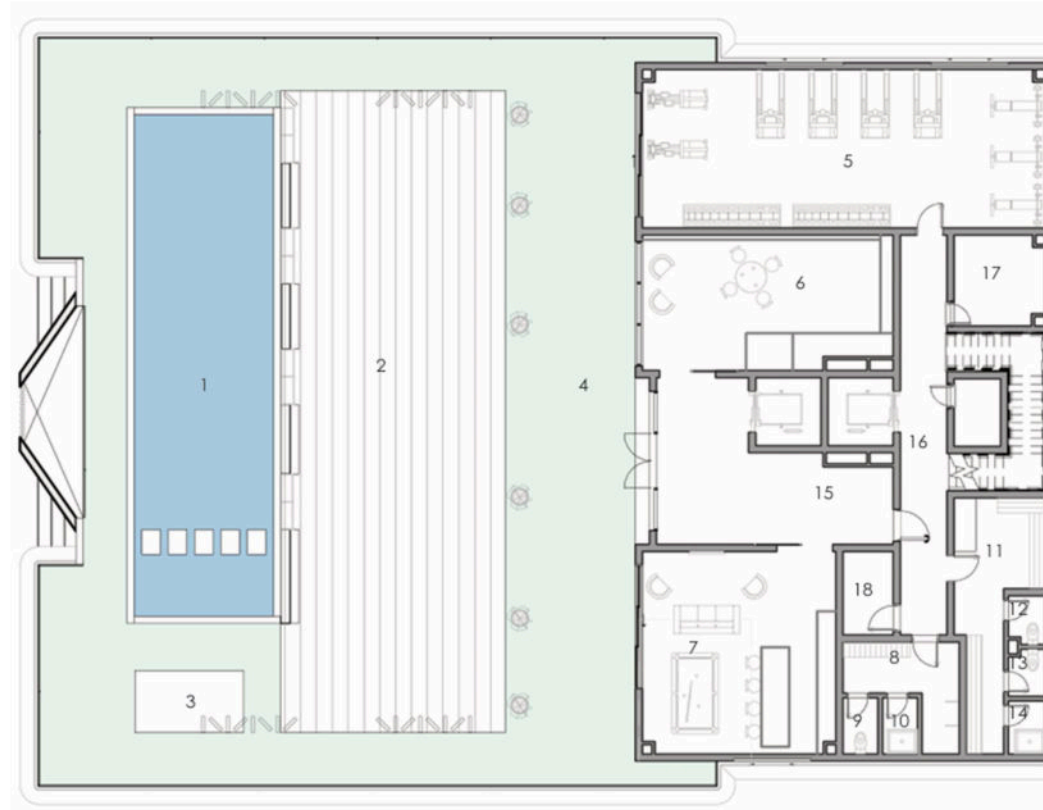
# Kitchen

The kitchens at Zurii Residence combine modern elegance with functionality, featuring premium materials, high-end appliances, and sleek cabinetry for effortless meal preparation. Thoughtfully designed with ample storage and refined finishes, they offer a seamless cooking experience that enhances both style and convenience.



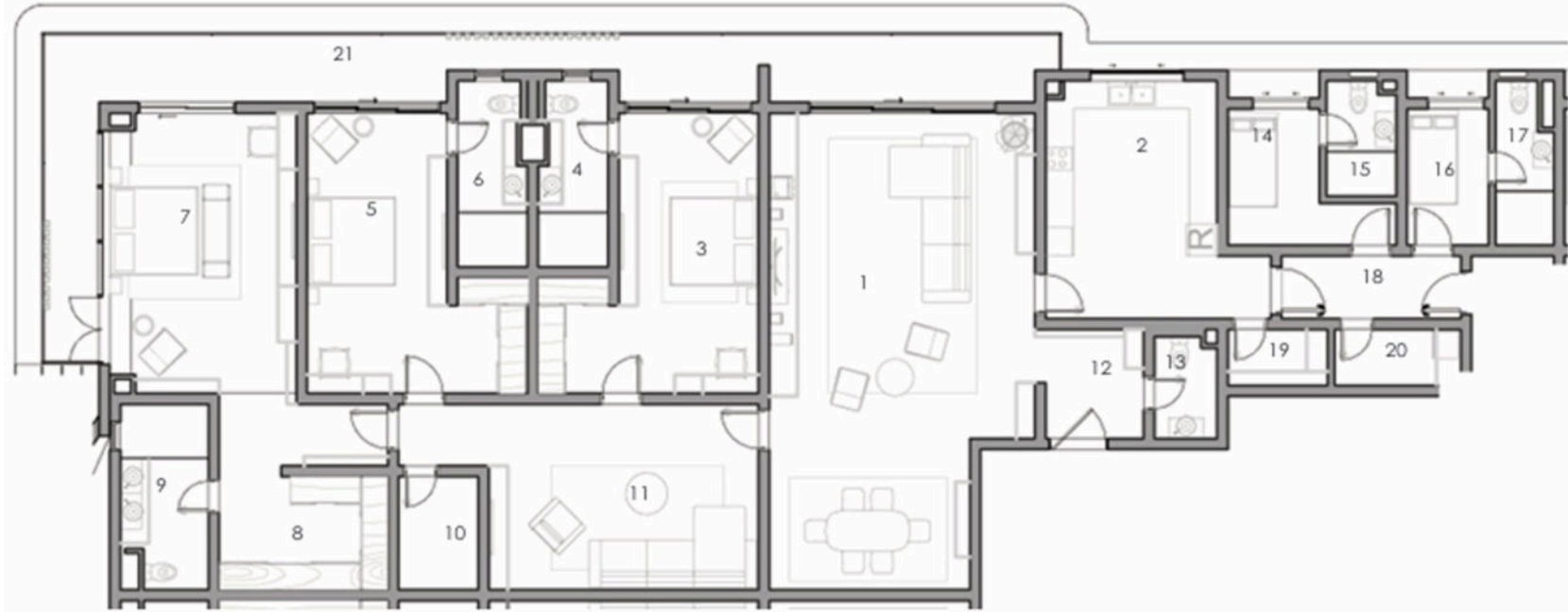
# Floor Plan

# Recreation & Liesure Suite



<b>1. Pool</b>	82 sqm	<b>6. Kids play area</b>	35 sqm	<b>11. Female locker room</b>	16 sqm	<b>16. Service lobby</b>	17 sqm
<b>2. Pool deck</b>	150 sqm	<b>7. Lounge / Games room</b>	35 sqm	<b>12. WC</b>	2 sqm	<b>17. Utility</b>	11 sqm
<b>3. Cabana</b>	7 sqm	<b>8. Male locker room</b>	9 sqm	<b>13. WC</b>	2 sqm	<b>18. Janitor</b>	4 sqm
<b>4. Green area</b>	219 sqm	<b>9. WC</b>	2 sqm	<b>14. Shower</b>	2 sqm	<b>19. Pool pump room</b>	4 sqm
<b>5. Gym</b>	66 sqm	<b>10. Shower</b>	2 sqm	<b>15. Resident lobby</b>	30 sqm		
						<b>Total Area:</b>	<b>660 sqm</b>

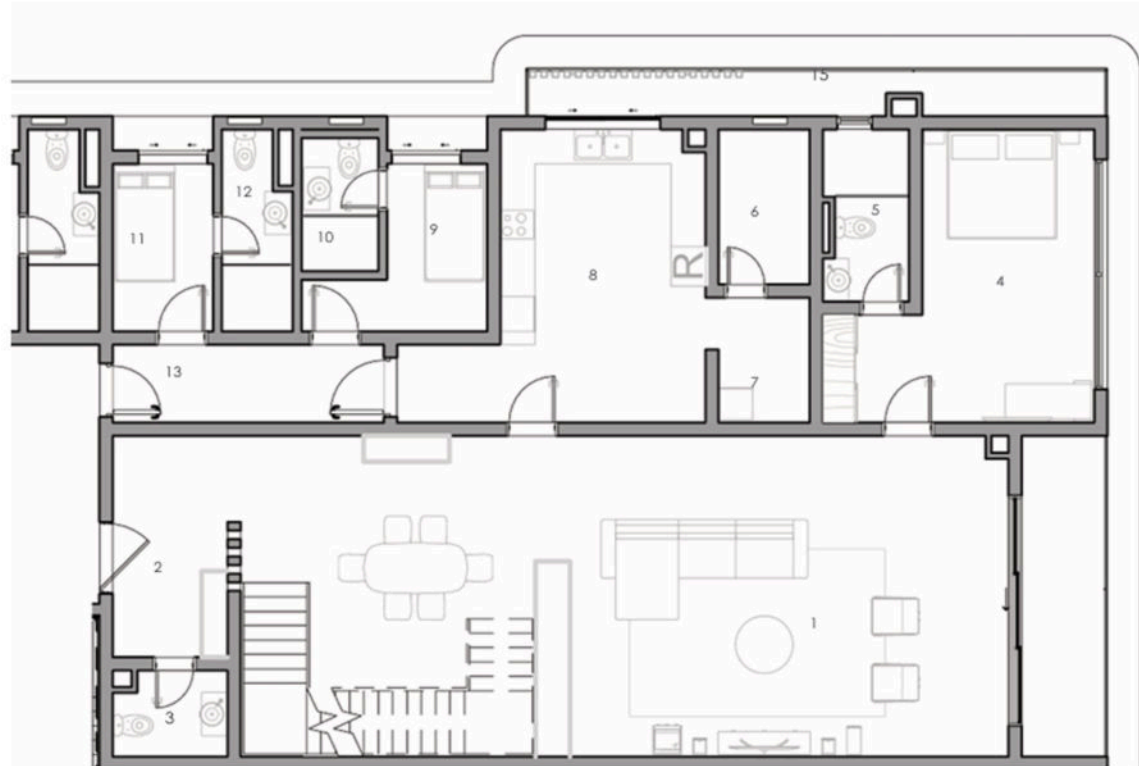
# 3 Bedroom Apartment



<b>1. Living area/Dining</b>	54 sqm	<b>6. Bath</b>	6 sqm	<b>11. Family Lounge</b>	26 sqm	<b>16. Staff Room 2</b>	4 sqm
<b>2. Kitchen</b>	20 sqm	<b>7. Master Bedroom</b>	29 sqm	<b>12. Ante room</b>	5 sqm	<b>17. Bath</b>	5 sqm
<b>3. Bedroom 2</b>	22 sqm	<b>8. Closet</b>	9 sqm	<b>13. V/t</b>	3 sqm	<b>18. Exit lobby</b>	4 sqm
<b>4. Bath</b>	6 sqm	<b>9. Master Bath</b>	7 sqm	<b>14. Staff Room 1</b>	7 sqm	<b>19. Store</b>	6 sqm
<b>5. Bedroom 3</b>	22 sqm	<b>10. Box room</b>	4 sqm	<b>15. Bath</b>	4 sqm	<b>20. Laundry</b>	3 sqm

**Total Area: 244 sqm    Terrace: 37 sqm**

# 4 Bedroom Maisonette Lower Level



**1. Living area/Dining** 75 sqm  
**2. Ante room** 8 sqm  
**3. V/t** 3 sqm  
**4. Bedroom 4** 19 sqm  
**5. Bath** 5 sqm

**6. Store** 4 sqm  
**7. Laundry** 3 sqm  
**8. Kitchen** 20 sqm  
**9. Staff Room 1** 6 sqm  
**10. Bath** 3 sqm

**11. Staff Room 2** 5 sqm  
**12. Bath** 4 sqm  
**13. Exit lobby** 8 sqm  
**Level Area:** 163 sqm  
**Terrace Area:** 16 sqm

**Total Unit Area:** 366 sqm  
 (lower + upper maisonette)

# 4 Bedroom Maisonette Upper Level



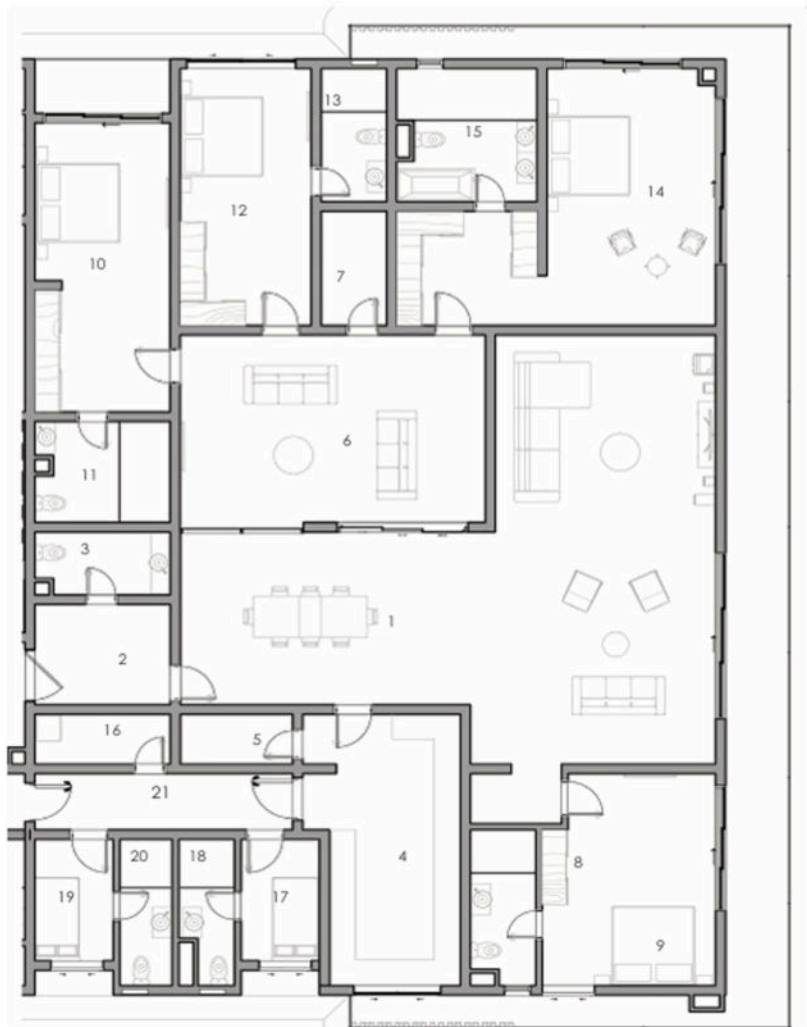
1. Family lounge	22 sqm
2. Box room	4 sqm
3. Stairs Lobby	22 sqm
4. Master bedroom	29 sqm
5. Closet	8 sqm

6. Bath	8 sqm
7. Bedroom 2	24 sqm
8. Bath	5 sqm
9. Bedroom 3	25 sqm
10. Bath	5 sqm

**Level Area: 152 sqm**  
**Terrace Area: 35 sqm**

**Total Unit Area: 366 sqm**  
*(lower + upper maisonette)*

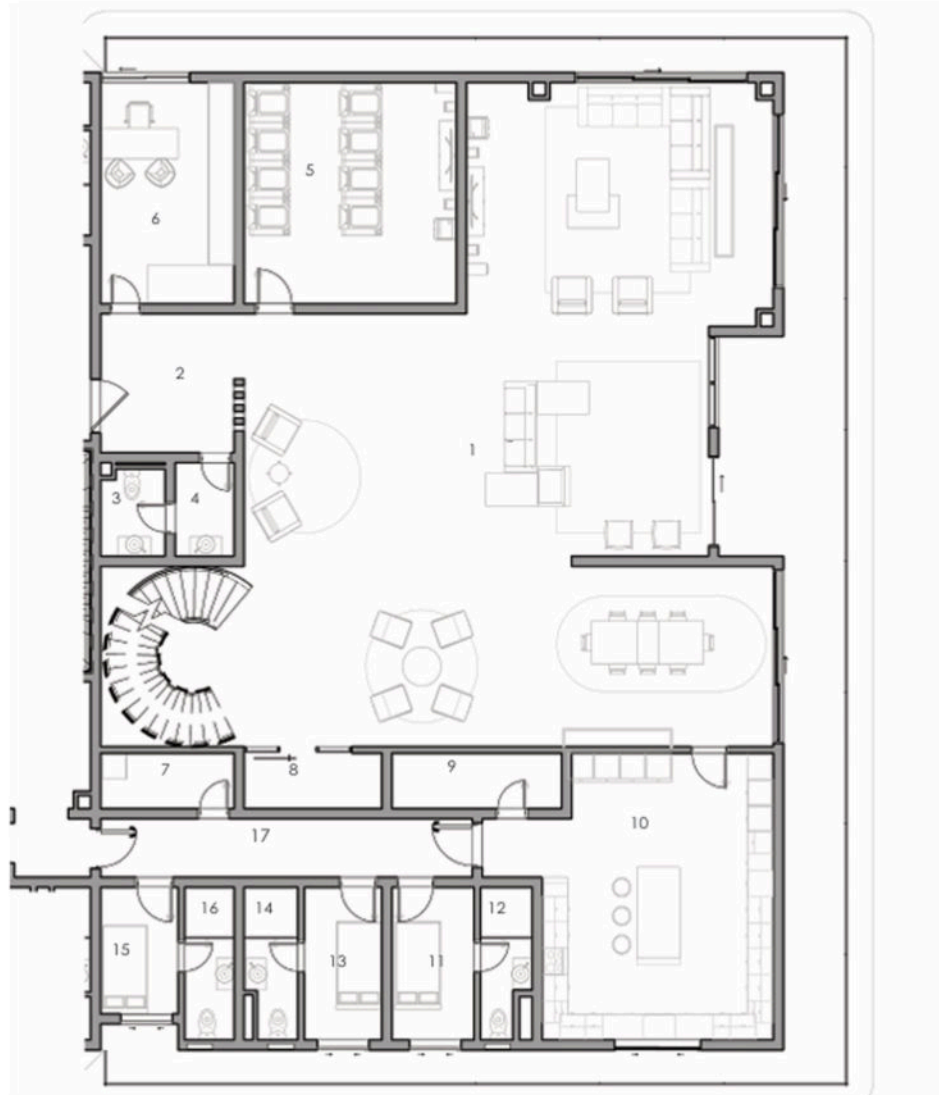
# 4 Bedroom Maisonette



<b>1. Living area/Dining</b>	83 sqm	<b>13. Bath</b>	4 sqm
<b>2. Ante room</b>	8 sqm	<b>14. Master Bedroom/Closet</b>	34 sqm
<b>3. V/t</b>	3 sqm	<b>15. Master Bath</b>	9 sqm
<b>4. Kitchen</b>	20 sqm	<b>16. Laundry</b>	4 sqm
<b>5. Store</b>	4 sqm	<b>17. Staff Room 1</b>	5 sqm
<b>6. Family Lounge</b>	32 sqm	<b>18. Bath</b>	4 sqm
<b>7. Boxroom</b>	4 sqm	<b>19. Staff Room 2</b>	5 sqm
<b>8. Bedroom 1</b>	23 sqm	<b>20. Bath</b>	4 sqm
<b>9. Bath</b>	4 sqm	<b>21. Exit lobby</b>	10 sqm
<b>10. Bedroom 2</b>	21 sqm		
<b>11. Bath</b>	7 sqm		
<b>12. Bedroom 3</b>	19 sqm		

**Level Area:** 307 sqm  
**Terrace Area:** 54 sqm

# 5 Penthouse Lower Level

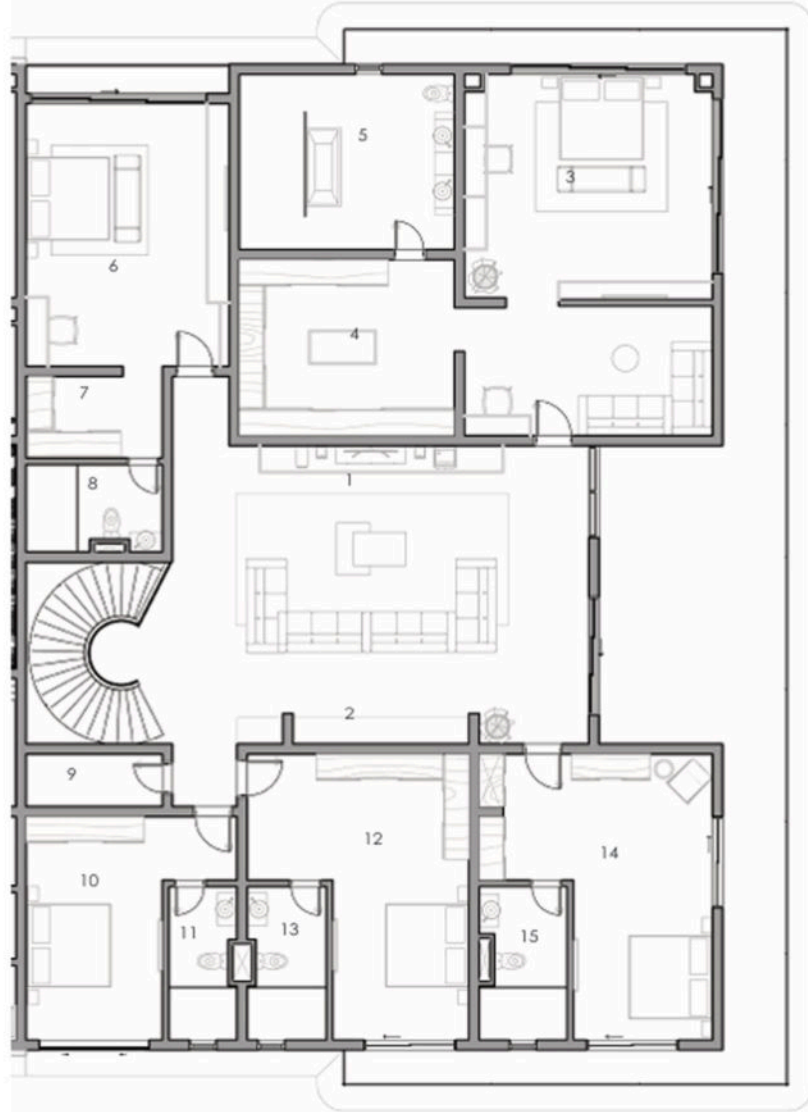


1. Living area/Dining	152 sqm	11. Staff Room 1	6 sqm
2. Ante room	10 sqm	12. Bath	4 sqm
3. V/t	3 sqm	13. Staff Room 2	6 sqm
4. Powder room	3 sqm	14. Bath	4 sqm
5. Home Cinema	36 sqm	15. Staff Room 3	6 sqm
6. IT	5 sqm	16. Bath	4 sqm
7. Laundry	4 sqm	17. Exit lobby	14 sqm
8. Cellar	4 sqm		
9. Store	4 sqm		
10. Kitchen	37 sqm		

**Level Area:** 302 sqm  
**Terrace Area:** 73 sqm

**Total Unit Area:** 733 sqm  
(lower + upper maisonette)

# 5 Penthouse Upper Level



<b>1. Family lounge</b>	65 sqm	<b>11. Bath</b>	5 sqm
<b>2. Kitchenette</b>	4 sqm	<b>12. Bedroom 4</b>	26 sqm
<b>3. Master bedroom</b>	46 sqm	<b>13. Bath</b>	6 sqm
<b>4. Closet</b>	20 sqm	<b>14. Bedroom 3</b>	26 sqm
<b>5. Master Bath</b>	18 sqm	<b>15. Bath</b>	7 sqm
<b>6. Bedroom 2</b>	28 sqm		
<b>7. Closet</b>	6 sqm		
<b>8. Bath</b>	6 sqm		
<b>9. Box room</b>	4 sqm		
<b>10. Guest bedroom</b>	18 sqm		
		<b>Level Area:</b>	285 sqm
		<b>Terrace Area:</b>	75 sqm
		<b>Total Unit Area:</b>	733 sqm
			(lower + upper maisonette)



R E S I D E N C E S